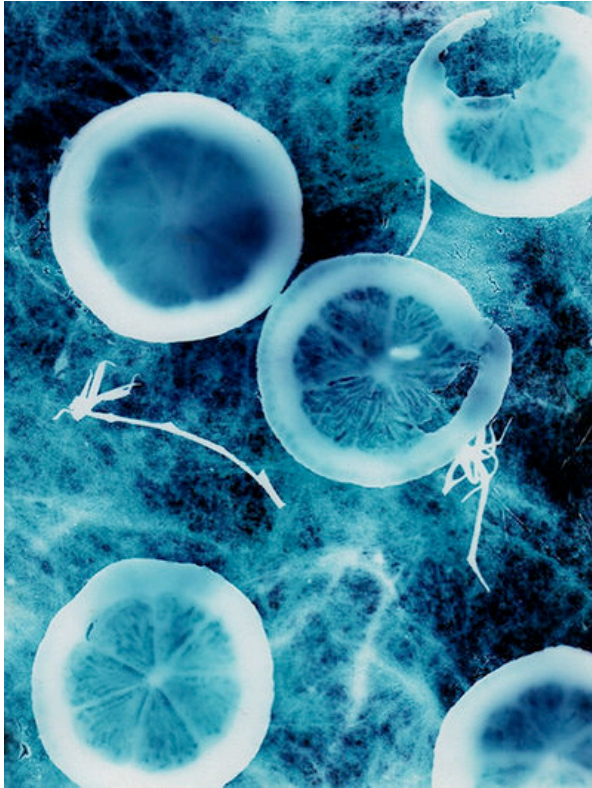


11 / SCANOGRAM¹

In the mid-1800s Anna Atkins and William Henry Fox Talbot developed a technique for creating photographic prints by placing objects on light sensitive paper. The results were always unpredictable impressionistic renderings like the one you see below. In the previous section we approached the scanner as a tool, in this section we will approach it as a medium by creating a scanogram.



Photogram of lemons by Cormaggio²

SCANOGRAM

A digital method of producing a “contact” image, by placing 3d objects on the scan bed.

CREATING SCANOGRAMS

In this exercise we will create a scanogram from an object of your choosing. PLEASE choose an object that will NOT scratch or damage the scanner.

YOU WILL NEED:

- A scanner.
- A 3d object to Scan.
- A Mac running OS X 7 or later.

STEPS:

1. Place your object on the scanning bed.
2. If the lid does not close use a dark cloth or even a jacket to prevent light from the scanner bouncing out.
3. OPEN Applications > Preview

PREVIEW

Preview is a program that comes with all Mac computers. You can use it to scan, open and make minor adjustments to images.

4. In the menu bar select: File > Import from Scanner

¹ Adapted from Digital Foundations Chapter 07

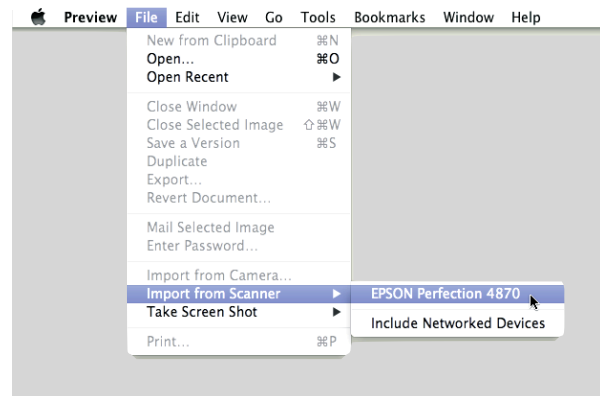
² SOURCE: <http://flickr.com/photos/digitalfoundations/2434298019/>

5. Preview often creates a “preview” of whatever is on the scan bed when it is launched. If this does not happen look for a button to create a preview (it is often labeled, “preview”, “overview”, “view” or “pre-scan”).
6. Using the marquee tool select your scan area leaving a little extra room.
7. Determine the resolution by thinking about how you want to use the image.
8. Preview displays the size of your final image next to the scan preview.
9. Choose the color mode and file format. Remember to avoid compressed formats like JPEG.
10. The last step is to click the “scan” button. Now check your results. How did it come out?

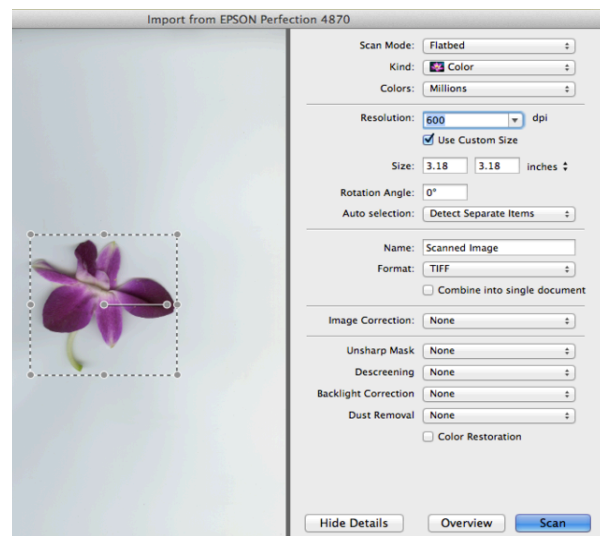
CONSIDER TOOLS

Often tools take on narrow roles despite their potential. Knowing the history of how a tool was developed can often trigger ideas for how to use it differently. Also using the “wrong tool” for the job can often come up with surprising results.

Find out the backstory for the tools that interest you. Or find artists using the wrong tools for your favorite techniques.



Using Preview to Import from a Scanner³.



Scan Settings Inside Preview. The box around the flower being scanned is the Marquee.

³ SOURCE | http://wiki.digital-foundations.net/index.php?title=File:Fig07_Ex1_01_CS6.png