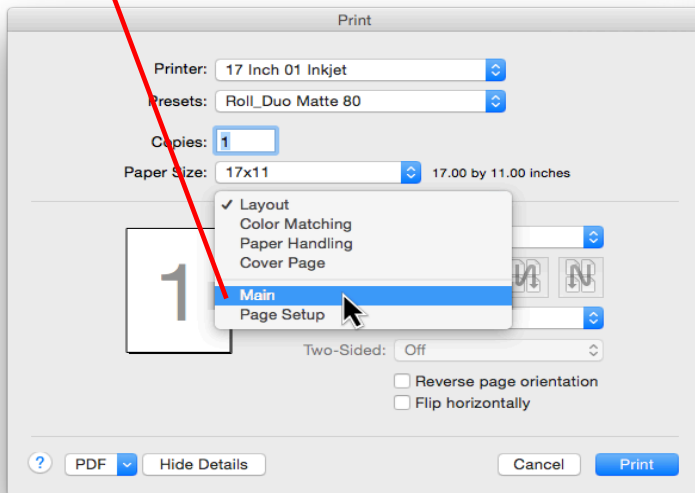
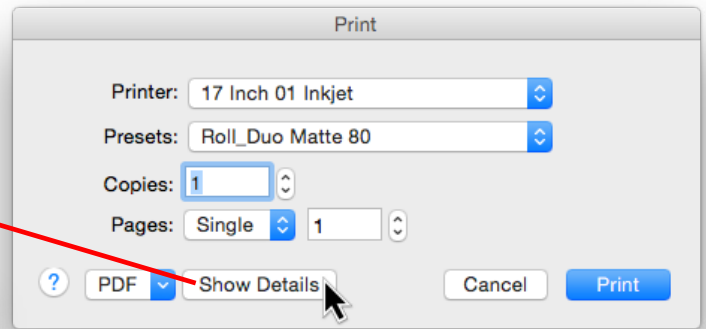


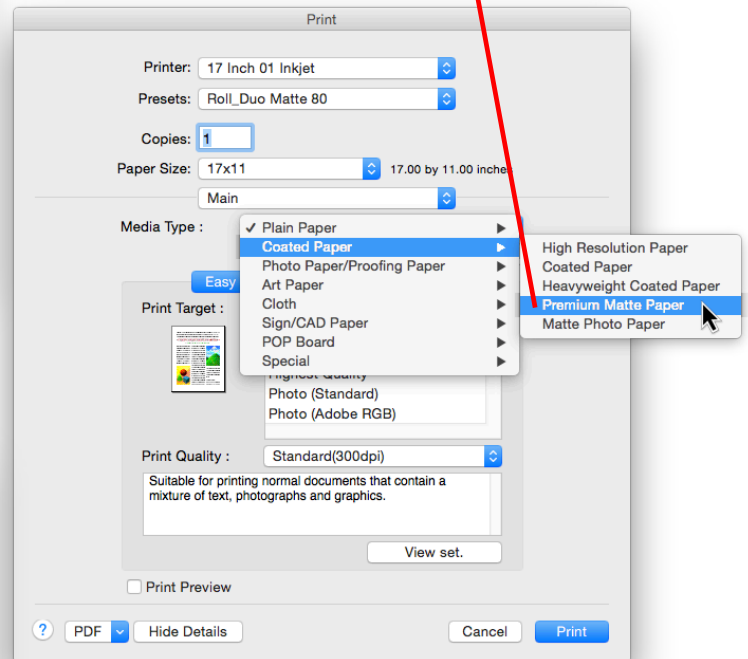
TO PRINT BLACK & WHITE ON THE CANON iP5100

1. In the "Print Settings" window click "Show Details" to access the full options version.

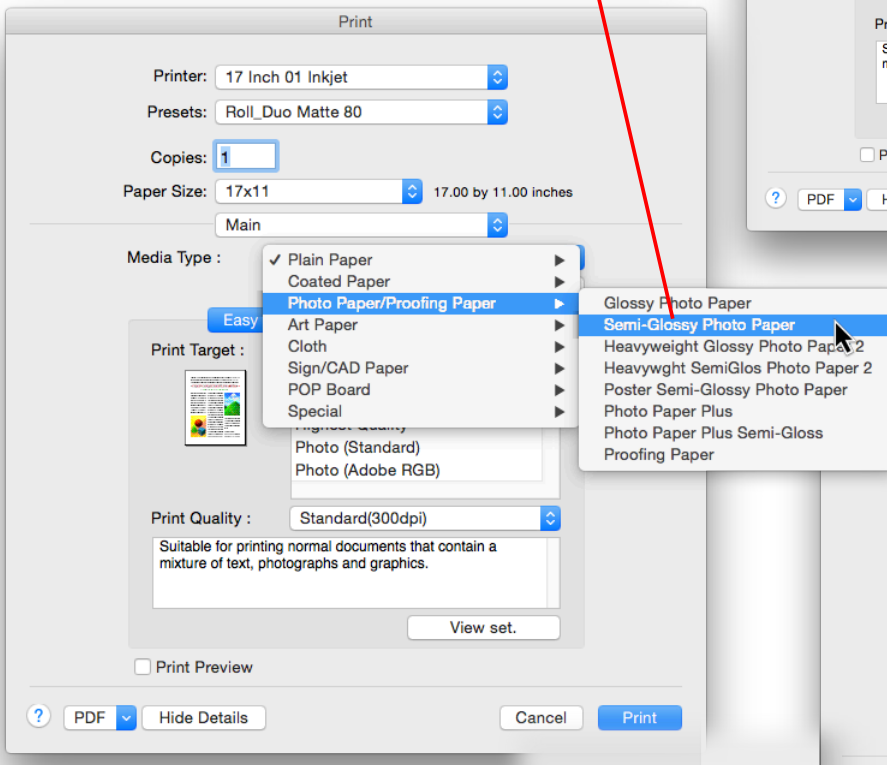
2. Click "Layout" and select "Main".



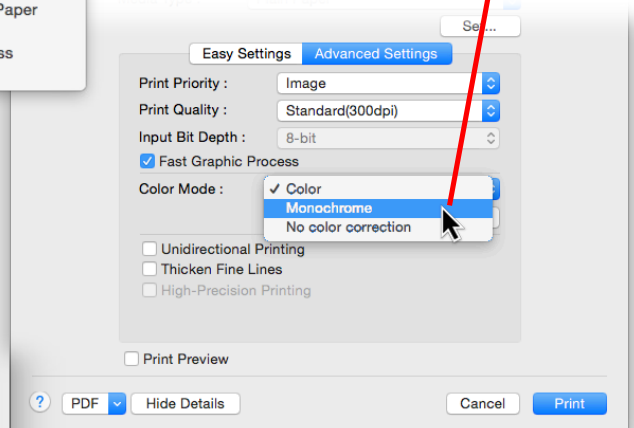
For Matte: 3. Click "Plain Paper". Under "Coated Paper" select "Premium Matte Paper".



For Luster: 3. Click "Plain Paper". Under "Photo Paper/Proofing Paper" select "Semi-Glossy Photo Paper".



4. Click the "Advanced" tab. Under "Color Mode" select "Color". Click "Monochrome (photo)".



5. Click "Save" to return to return to the Photoshop print dialog.

